

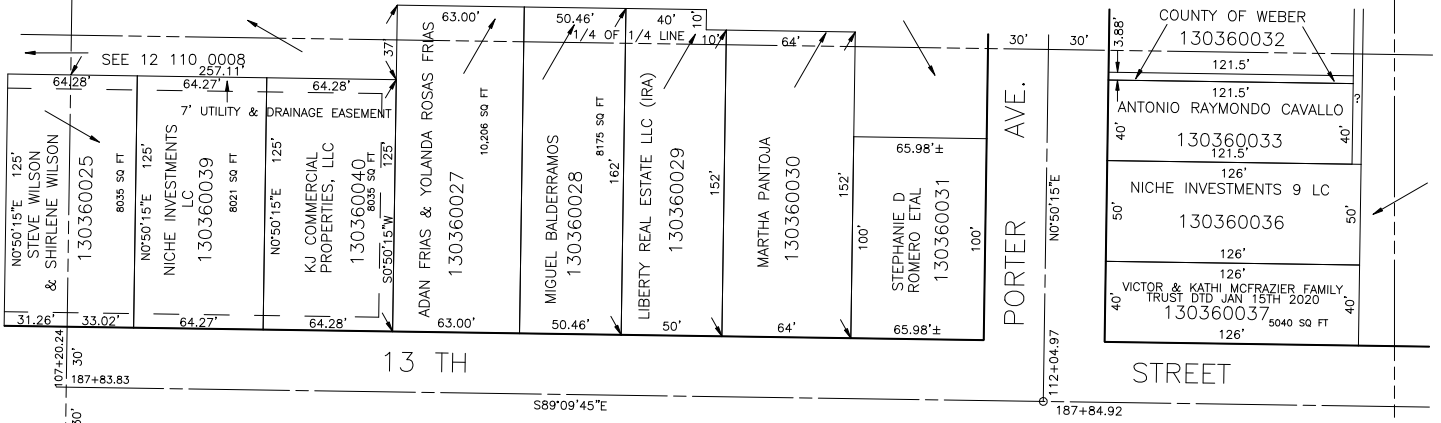
S.W. 1/4 OF S.W. 1/4 OF N.W. 1/4
SECTION 21, T.6N., R.1W., S.L.B. & M.

IN OGDEN CITY

SCALE 1" = 50'

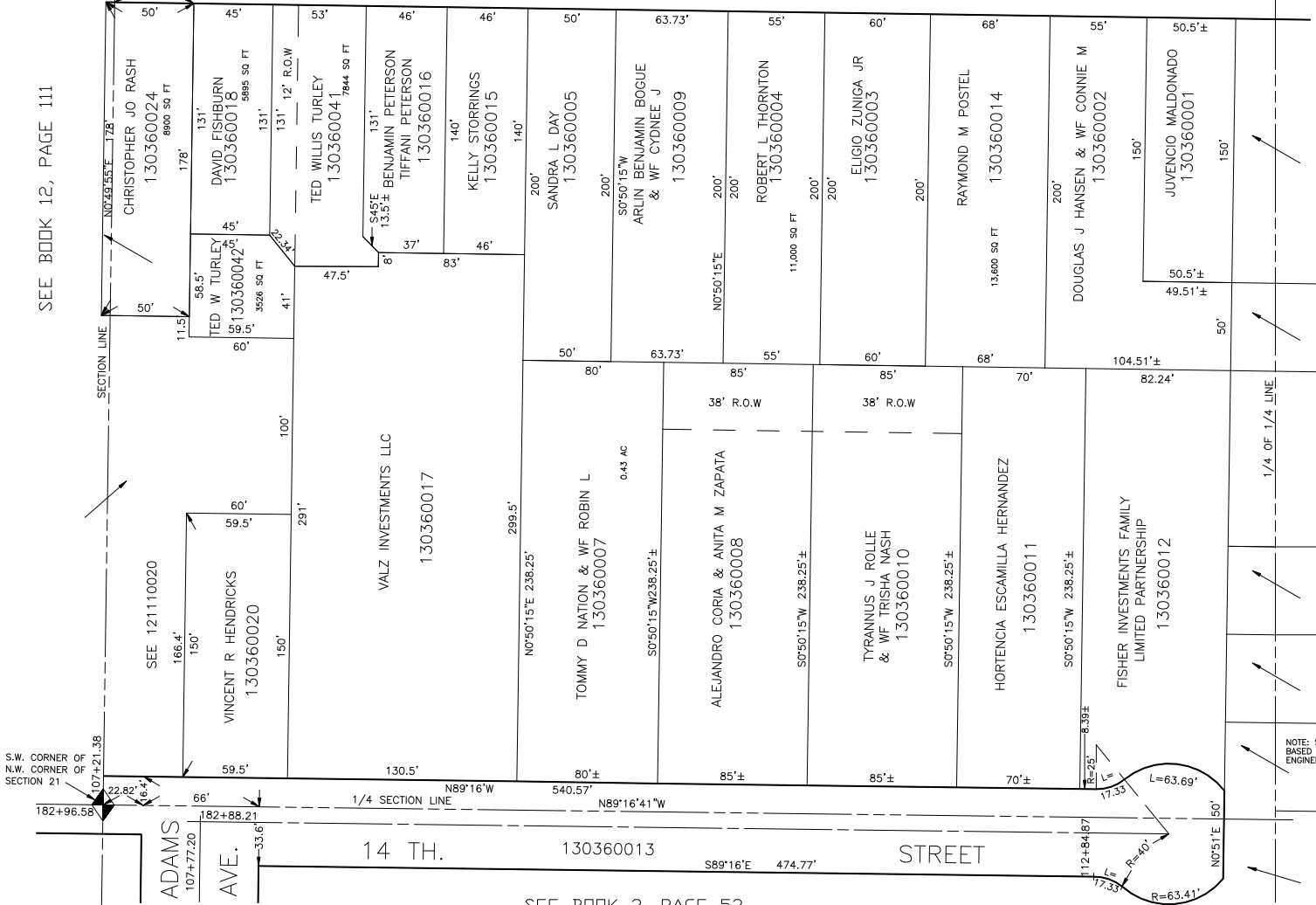
SEE PAGE 33

TAXING UNIT: 25



SEE BOOK 12, PAGE 111

SEE PAGE 35



S.W. CORNER OF N.W. CORNER OF SECTION 21

NOTE: STREET DATA BASED ON OGDEN CITY ENGINEER'S PLATS